

# MONUMENT TOOLS PUZZLE PAGE

For this issue's puzzle page, Monument Tools is giving away five Sink & Tap Back Nut Kits and Radiator Kits with Grip+ technology.

Monument has designed a range of Monument Grip+ tools to fit the head of the original adjustable basin wrench.

The adjustable basin wrench was developed in the 1950s for the difficult job of getting at nuts underneath basins. What is now the Professional Adjustable Basin Wrench (345V) with three sizes of jaw is considered to be the best tool for the job due to its small head size.

It seemed logical, therefore, that there could be lots of other jobs that could be done by attaching different tools using the same head. So, the Monument design engineers looked at all sorts of tasks and have come up with numerous attachments forming the Monument Grip+ range; these all fit on to the existing head of the Professional Adjustable Basin Wrench.

The Sink and Tap Back Nut Kit includes 8-13mm monobloc and 27x32mm box spanners for most kitchen and bathroom taps. Also included is the Shorty Handle

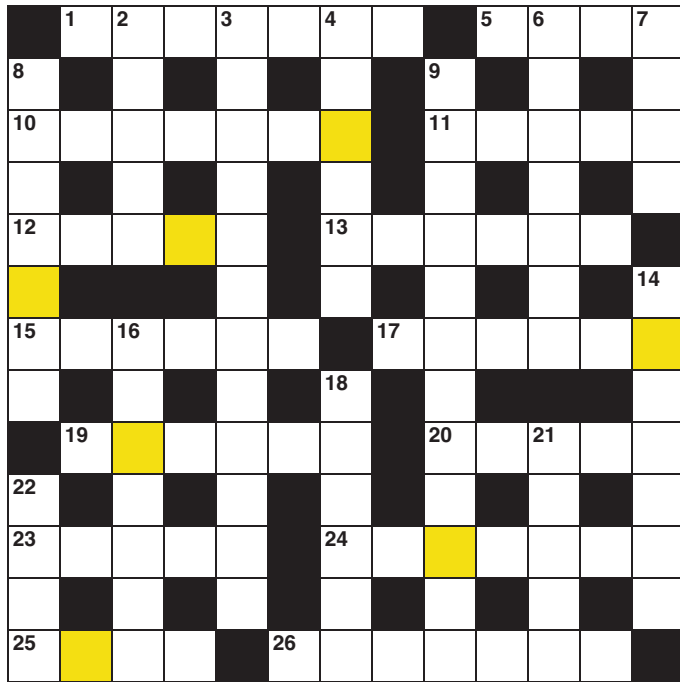
Basin Wrench and the Grip+ fittings, which connect the head of the Basin Wrench to the box spanners. This allows for extended reach, access, and leverage.

The kit also contains a three prong tool for holding a sink rose/strainer while fitting the waste nut with a 50mm box spanner.

The Radiator Kit contains the Shorty Handle Basin Wrench and a number of tools for radiators. These include Grip+ tools for drain cocks, radiator valves, and bleed valves, radiator balancing tools, as well as a TRV tail driver.

## CROSSWORD

Rearrange the letters in the shaded squares to spell out a random word.



## ACROSS

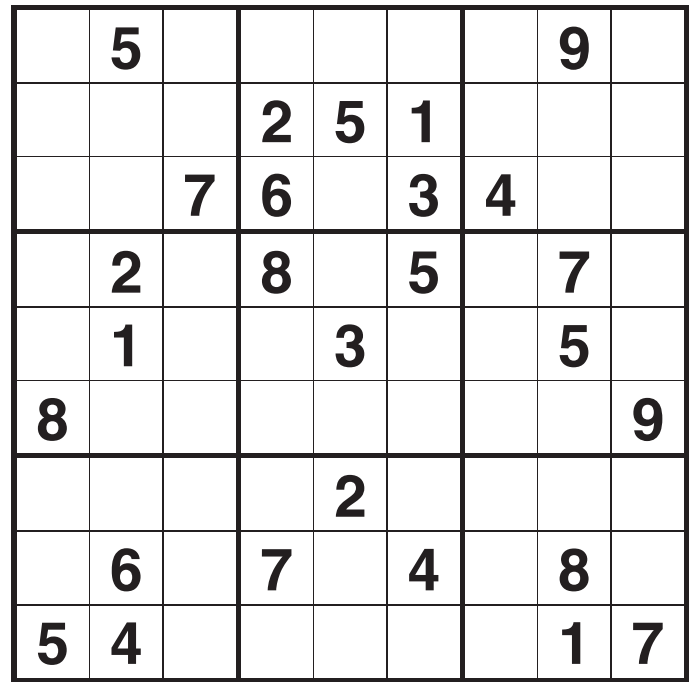
- 1 Business enterprise (7)
- 5 Caustic (4)
- 10 Doubly (7)
- 11 More (5)
- 12 Royal dog (5)
- 13 Helix (6)
- 15 Merged, joined (6)
- 17 Place of refuge (6)
- 19 Large blob (6)
- 20 Top part (5)
- 23 Another time (5)
- 24 Causing many problems (7)
- 25 Had already learned (4)
- 26 Last (7)

## DOWN

- 2 Unpleasant smell (5)
- 3 Biblical ideal country? (8,4)
- 4 Naked sun worshipper (6)
- 6 Disapproving cry (7)
- 7 Bargain (4)
- 8 Toffee nosed (5,2)
- 9 Broad A Level subject (5,7)
- 14 Cause admiration (7)
- 16 Keep in solitary confinement (7)
- 18 Thin on the ground (6)
- 21 Devout (5)
- 22 Unlit (4)

## SUDOKU

Fill the grid with the numbers 1 to 9 so that each row, column and 3x3 block contains the numbers 1 to 9.



## GET IN TOUCH TO WIN

Every month, Monument Tools and HVP will be partnering to give away a new, unique prize on each issue's puzzle page. To enter, just send us your details and the word spelled out by the shaded squares in the crossword.

To enter this month's competition and view the terms and conditions for entry, head to: [bit.ly/hvpaprilpuzzle](http://bit.ly/hvpaprilpuzzle).

To view solutions for past puzzle pages, please visit: [bit.ly/hvppuzzlepage](http://bit.ly/hvppuzzlepage).

**Puzzler**

All puzzles  
© Puzzler Media Ltd  
[www.puzzler.com](http://www.puzzler.com)